

**BOOM SWING
POWERFUL OPERATION
WORLD-CLASS SAFETY
EASY MAINTENANCE
ENVIRONMENT FRIENDLY
ROBUST AND COMFORTABLE
HYDRAULICALLY ADJUSTABLE TRACK**

mini
TB 219



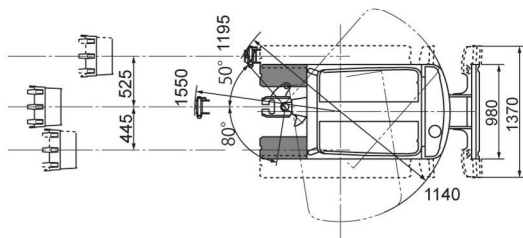
In 1970 TAKEUCHI developed the world's first 2-ton class compact excavator (TB1000) having an independent boom swing structure. These so called mini shovels attracted a great deal of attention in the construction industry and opened an entirely new opportunity in global market.



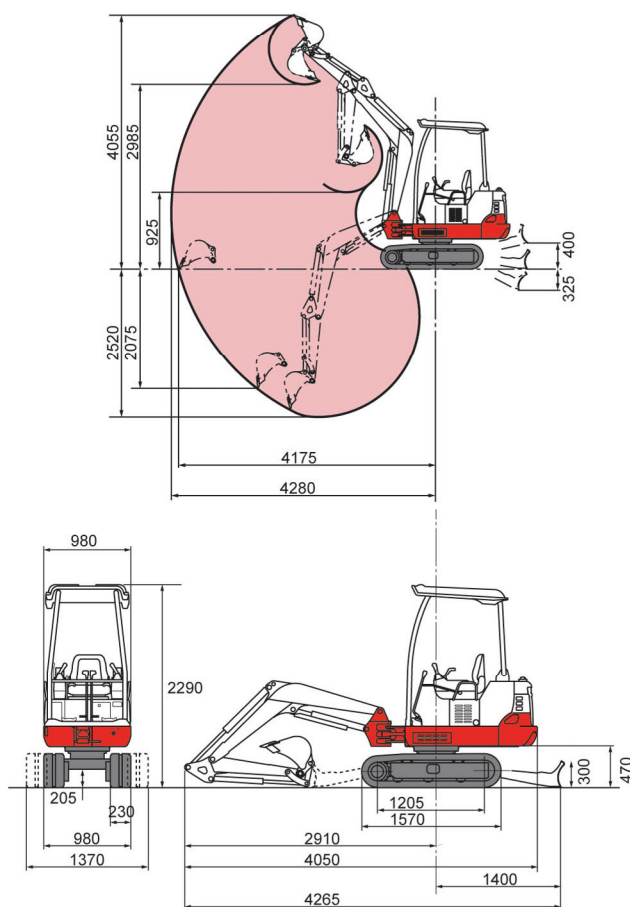
mini TB219

FULL HYDRAULIC COMPACT EXCAVATOR

MACHINE DIMENSIONS : mm



OPERATING RANGES (Long Arm) : mm



Weight			
Machine Weight	kg	Canopy 1945	Cabin 2070
Bucket			
Bucket Capacity (Heaped) m ³	0.046 (Heaped)		
Bucket Width	mm	450	
Dozer Blade			
Width x Height : mm	980 / 1370 x 300		
Operating Range Up / Down	mm	400 / 325	
Diesel Engine (Water-Cooled)			
Model	3TNV70		
Cylinders / Type	3 / 4CYCL		
Rated Power	kW	11.5 / 2,500 min ⁻¹	

SPECIFICATIONS TB219

Maximum Torque	N·m	48.4 - 52.7
Displacement	mL	854
Engine Coolant.	L	3.7
Engine Oil	L	2.8
Fuel Tank	L	24
Electric System	V-A·h	12-45
PERFORMANCE		
Traction Speed	km/h	2.4 / 4.0
Upper Slew Speed	min ⁻¹	8.7
Gradeability	degrees	15
Max Dig power Bucket	kN	16
Max Dig power Arm	kN	11.4

*Breaker Piping Standard

Ground Pressure	kPa	Canopy 31.1	Cabin 33.1
OFF-SET DIG FUNCTION			
Type	Boom Swing		
Swing Angle RH / LH (Cabin)	50° / 80°		
HYDRAULIC SYSTEM			
Pump type	Variable x 2 + Gear x 2		
Set Pressure	MPa	20.6 x 2 + 18.0 x 1	
Discharge	L/min	20.0 x 2 + 11.3 x 1	
Slew Motor	Orbit		
Traction Motor	Axial Piston		
Hydraulic Capacity	L	23	



M/s ROSA INTERNATIONAL

Company Add. : G-21, Ground Floor, NDM-2, Netaji Subhash Place
Pitampura, New Delhi-110 034

E-mail : rosa.international19@gmail.com
Phone : +91 9718-882-811